

POHL



**Solutions and systems
for architectural sheet
metal cladding**

THE STATEMENT OF YOUR BUILDING



Ragon Institute · Cambridge · USA | © Robert Benson



Exclusive metal panel solutions for outstanding architecture.

POHL specializes in engineering and fabrication of bespoke metal panel solutions, offering a wide range of materials and surfaces for striking exterior and interior cladding. Regardless of shape, color, or material, we embrace every challenge to transform architectural visions into **THE STATEMENT OF YOUR BUILDING.**

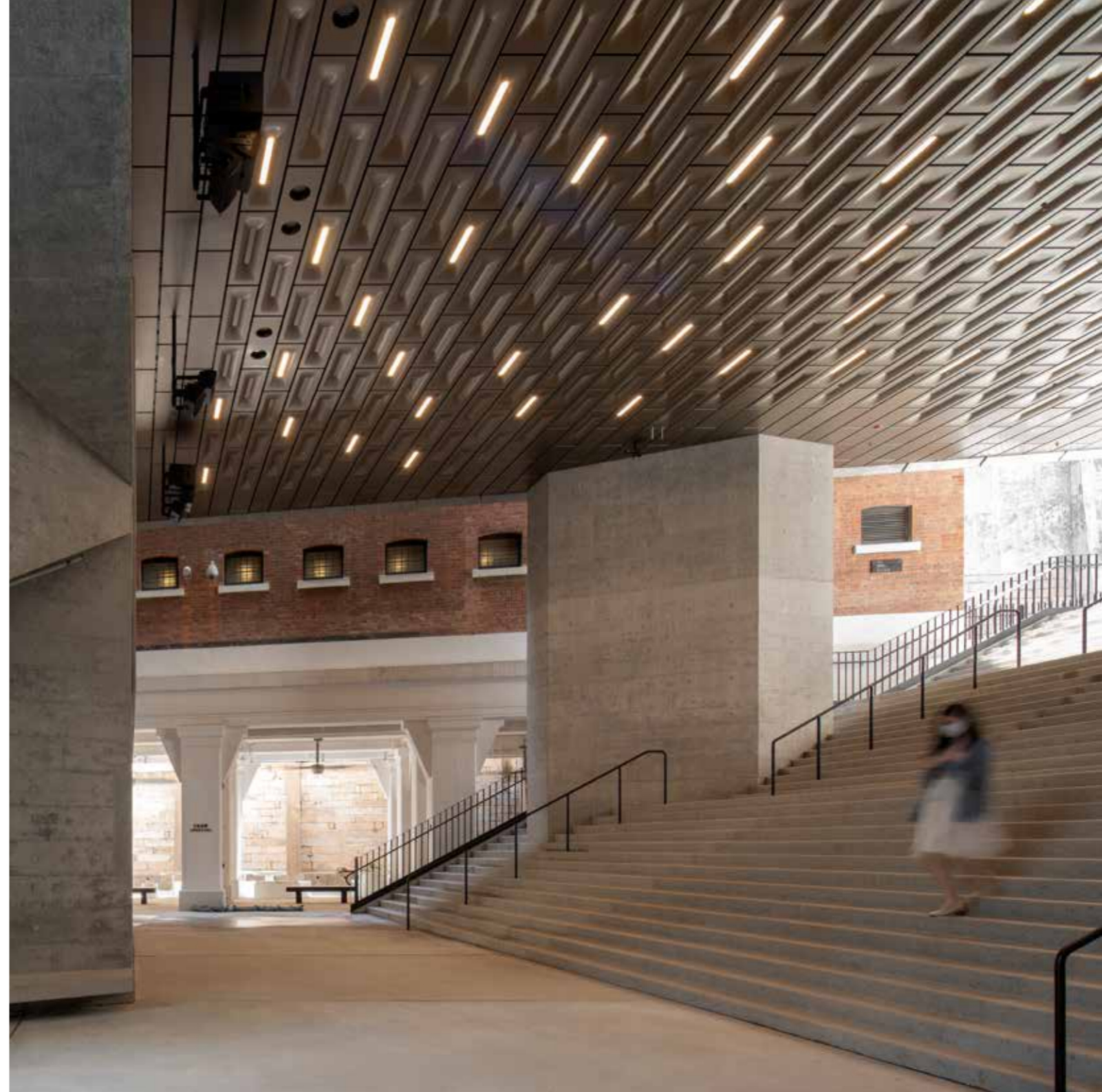
POHL Solutions

With decades of experience and expertise, we collaborate with renowned architectural firms worldwide to shape the skylines of global metropolitan cities. Whether system-based or custom facades, we bring our full knowledge and cutting-edge technologies to every project, turning your vision into reality with utmost precision. Our sophisticated solutions enhance every application within a building, giving it their very own character.

POHL offers a wide range of solutions, including:

- Rainscreen systems
- Overclad and reclad solutions
- Infill panels for unitized systems
- Column claddings
- Perforated panels
- Soffit and ceiling cladding
- Entrances and canopies
- Interior cladding
- Architectural fins

Taikwun · Hongkong · China | © Kris Provoost



Materials and Surfaces

In architecture, and particularly in facade construction, materials must remain both functional and aesthetically durable over many years. With a growing focus on sustainability in modern urban development, we face new challenges. To meet these demands, we utilize recycled materials and exclusively work with solid metals in our production. Our advanced finishing techniques and expertise in metal forming perfectly complement the overall design, creating durable, energy efficient and visually striking solutions.

Australian Embassy · Washington DC · USA | © Ron Blunt





Visual Arts Building · Iowa · USA | © Iwan Baan

Aluminum

An ideal material for facade design, combining lightness, stability, and versatility. Anodizing or powder coating enhances its durability, resilience, and aesthetic. Besides all standard colors we also create custom finishes tailored to unique architectural concepts.

Stainless Steel

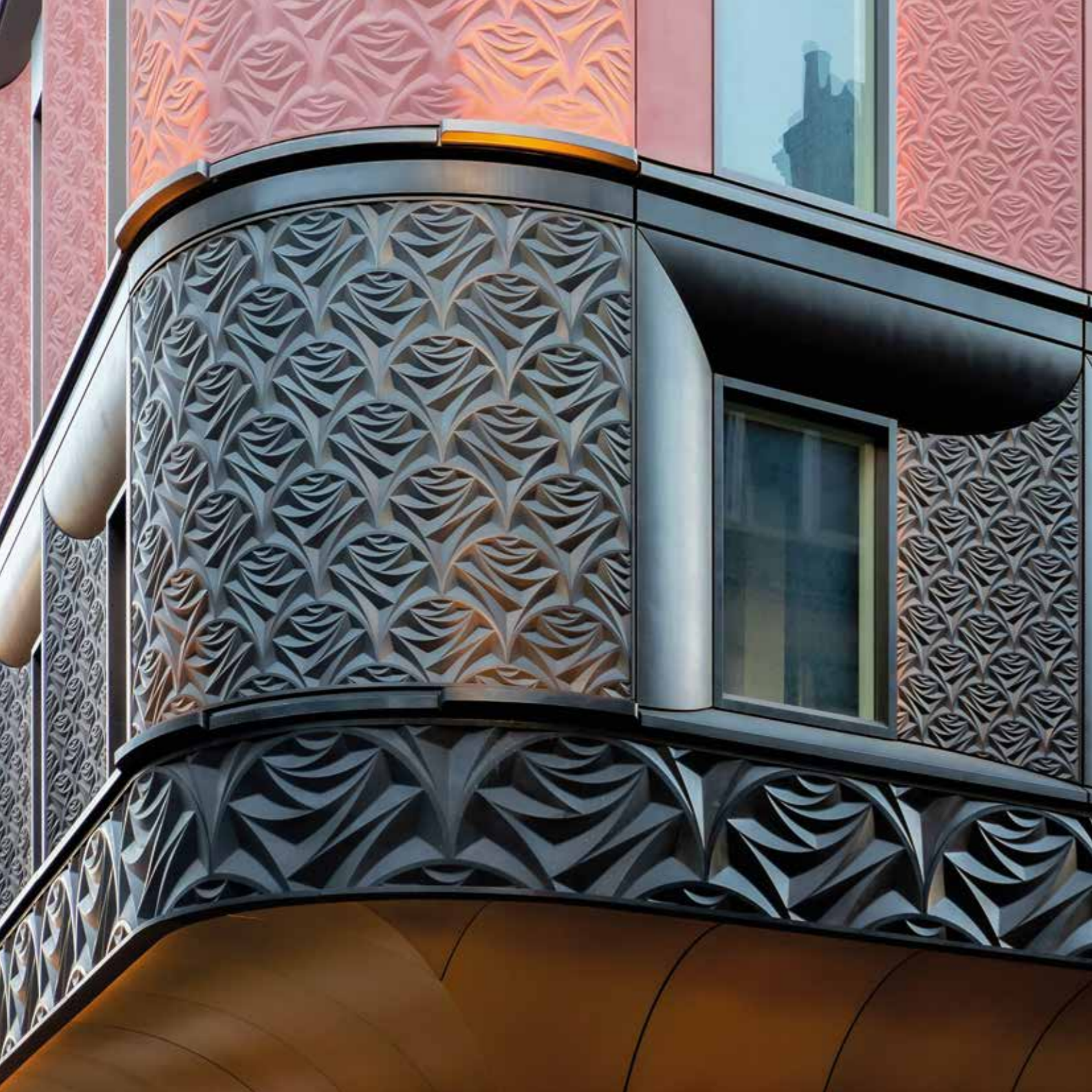
Its exceptional corrosion resistance ensures long-lasting durability while maintaining its aesthetic appeal over time. Colored stainless steel, combined with a matte finish or high-gloss polish, offers exclusive and modern designs that bring depth and vibrancy to any facade or interior cladding.

Brass and Copper

With POHL Bronze, we have created an exceptionally elegant solution based on brass and copper alloys, that adds a sophisticated and unique look to a building. The color spectrum ranges from reddish to gold to brownish shades and is fundamentally influenced by the choice of alloy, finish, patination, and sealing.

Weathering Steel

With POHL Phoenix, we create a rust patina on the surface of the Corten steel sheets. The surface stands out with a high resistance to weathering and is manufactured without paint or further chemicals.



POHL 360° Service

Guiding you from the initial stages of development and design through to the final phases of manufacturing, POHL provides comprehensive support throughout the entirety of your project.

If you are working towards LEED or BREEAM certification, we are here to provide you with expert support.

Architectural Consultancy

- Expert guidance in selecting optimal materials, finishes, and systems tailored to project needs
- Value engineering services without compromising quality or design, while guiding through compliance of local building codes

Design Assist and Mock-Ups

- Technical feasibility analysis for complex designs
- Production of physical and digital mock-ups for accurate representation of proposed solutions

Engineering

- Detailed shop and fabrication drawings in 2D and 3D
- Structural and thermal performance analysis to meet project-specific requirements

Manufacturing

- Custom fabrication of freeform metal solutions in complex 3D shapes
- Large sheet metal forming with precision
- Use of advanced technologies to produce high-performance, sustainable solutions

Rainscreen drained and back ventilated systems

Rainscreen facades provide a modern, durable, and aesthetically versatile solution for building envelopes. By creating a ventilated cavity behind the cladding, these systems optimize moisture management, thermal efficiency, and overall building performance.

Ease of Installation

POHL systems are designed for quick and easy installation. Fully finished and pre-assembled components ensure no exposed or raw cut edges. No on-site cutting is required.

Innovative Design Versatility

POHL systems support diverse architectural expressions with a wide range of finishes and materials, seamlessly integrating with unitized systems, walls, soffits, columns, or interior applications.

Commitment to Quality & Building Standards

- POHL systems are tested and certified to meet AAMA 509 standards
- Use of solid metal makes it a non-combustible system as per NFPA 285 / class A1 requirements
- High-quality materials ensure longevity and reduced maintenance
- Environmentally conscious manufacturing practices align with green building standards such as LEED / BREEAM



POHL SYSTEMS

POHL Europanel

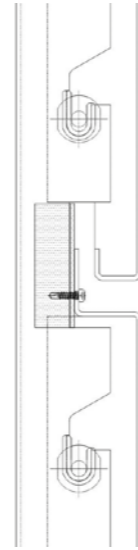
Cladding panels with folded returns, recessed joints and invisible fixings. The folded returns provide stability to the panels and soften the appearance of the joints. With integrated drainage profile and full allowance for thermal movements.

Design Features: Recessed joints, rounded edges for depth and strength

Appearance: Offers a clean and smooth aesthetic with concealed POHL Pin fixings

Structural Integrity: Enhanced rigidity due to the folded design, making it ideal for larger panel sizes

Applications: Suitable for large-sized panels with a bold and uniform appearance



V-SECTION
POHL EUROPANEL



Cromwell Place · London · UK | © Matt Chisnall





Thomas More Square · London · UK | © Philip Vile

POHL SYSTEMS

POHL Europlate

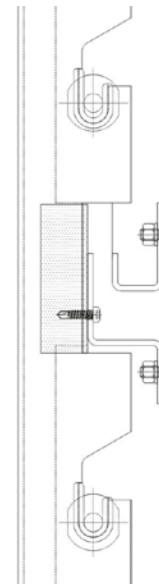
Cladding panels with sharp edges and recessed or flush joints, that create a striking facade with clean joint lines. The system accommodates full thermal movement and features concealed POHL Pin fixings along with open joints for a sleek, modern appearance.

Design Features: Allowing for custom solutions with 2D and 3D designs

Appearance: Striking, sharp-edged plates in a cassette look with visible joints

Structural Integrity: Sharp profile without the additional depth of folds, emphasizing clean lines

Applications: Ideal for modern concepts and a minimalistic design language



V-SECTION
POHL EUROPLATE





Kaicenter · Düsseldorf · Germany | © Manos Meisen

POHL SYSTEMS

POHL Ecopanel

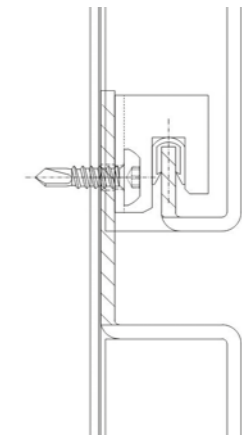
Long, narrow cladding panels with rounded edges and recessed joints, provide enhanced stability and a softened joint appearance. Designed for horizontal modulations, this system is ideal for medium-height panels and wide formats.

Design Features: The folded returns provide strength and depth to the panels

Appearance: clean, narrow lines with a horizontal emphasis for sleek concepts

Structural Integrity: POHL brackets securely hold the panels, preserving their visual integrity

Applications: an economical rain-screen cladding system for all types of buildings



V-SECTION
POHL ECOPANEL



Kubus · Aalen · Germany | © Architektur und Projektentwicklung: merz objektbau GmbH & Co. KG, David Matthiessen

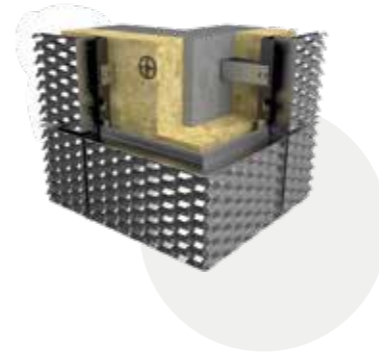
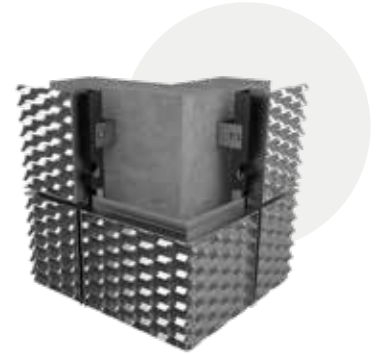
POHL SYSTEMS

Expanded Metal

POHL Europanel EM

Expanded metal cold facade

This system serves as horizontal or vertical accents, providing privacy and sun protection for glass facades, louvers or cladding for structures like parking garages, allowing optimal airflow and natural light.



POHL Europanel EM-P

Expanded metal warm facade

This closed system with a metal backpanel is an additional version of the POHL Europanel facade, combining all the benefits of a ventilated curtain wall system.

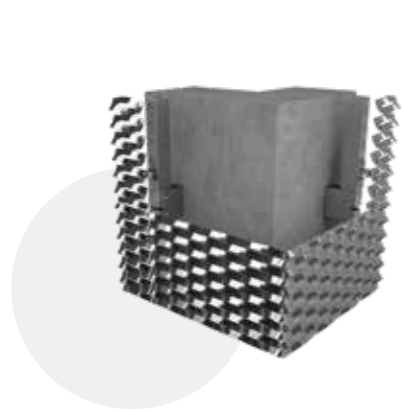
Available in different mesh types and surface finishes.

Expanded Metal

POHL Ecopanel EM

Expanded metal cold facade

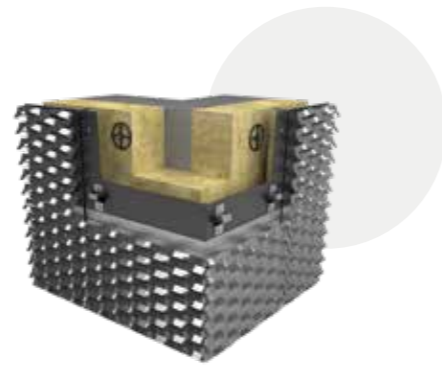
This cold facade serves as effective privacy and sun protection for glass facades, vent covers or as air- and light-permeable cladding for parking garages. Ideal for creating highlights in interior design.



POHL Ecopanel EM-P

Expanded metal warm facade

This closed system variant with a metal backpanel is a further variant of the POHL Ecopanel system facade and offers all the advantages of a ventilated curtain wall facade.



Available in different mesh types and surface finishes.





110 North Wacker - Chicago - USA | © Nick Olivieri Photography

POHL SYSTEMS

POHL Column

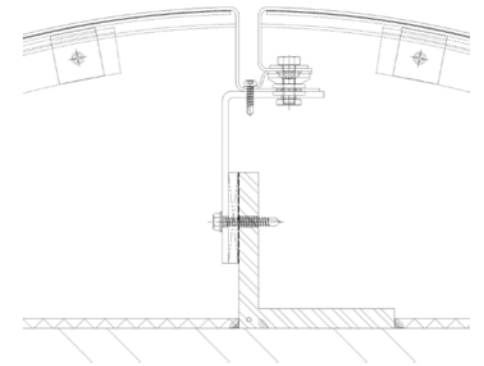
Based on our proven hook-and-pin systems – POHL Europanel and Europlate – POHL Column brings precision and elegance to column cladding, transforming structural elements into architectural features.

Design Features: Seamless integration with the building's facade system

Appearance: Customizable shapes and large panel formats, round or square column designs

Structural Integrity: Easy installation with hook-and-pin technology for secure and efficient assembly

Applications: Applicable for all column shapes and sizes



H-SECTION POHL COLUMN



POHL SYSTEMS

POHL Interior

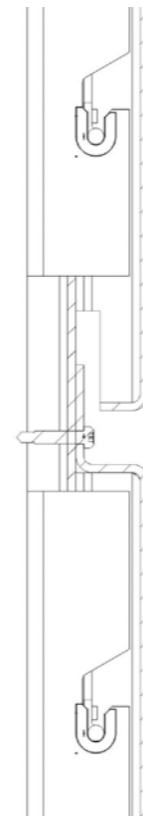
The POHL Interior system extends our expertise in metal facade solutions to interior spaces, offering sleek, modern design possibilities. Utilizing the same advanced hook-and-pin mechanisms, this system ensures precision and quality in interior cladding.

Design Features: Ideal for walls, ceilings, and other architectural interior applications

Appearance: Enhances interior spaces, giving them a unique look

Structural Integrity: Flexible system design allows for integration with lighting and acoustic elements

Application: Interior wall and ceiling claddings with all materials and finishes



V-SECTION
POHL INTERIOR

The Mart - Chicago - USA | © Magda Biernat



POHL

POHL FACADE DIVISION

POHL Metal Systems GmbH
Robert-Bosch-Str. 6
50769 Cologne
Germany

Tel.: +49 221 70911-0

info@pohl-facades.com
www.pohl-facades.com

