



POHL



**Stainless steel
solutions for
metal cladding**

 **THE STATEMENT OF YOUR BUILDING**



110 North Wacker - Chicago - USA | © Nick Ulivieri Photography

┌
**Exclusive metal
panel solutions
for impressive
architecture.**

POHL specializes in engineering and fabrication of bespoke metal panel solutions with various materials and surfaces. Our forte is the creation of unique and complex metal cladding for exterior and interior applications of a building. Regardless of shape, color, or material, we embrace every challenge to transform your building into a landmark that captivates and leaves a lasting impression on its viewers.



Burbank Studios · Burbank · USA | © Tim Hurstley

With extensive experience and expertise in the industry, we collaborate with renowned architectural firms across the globe. Commitment to quality is paramount to us – it ensures that every project we undertake

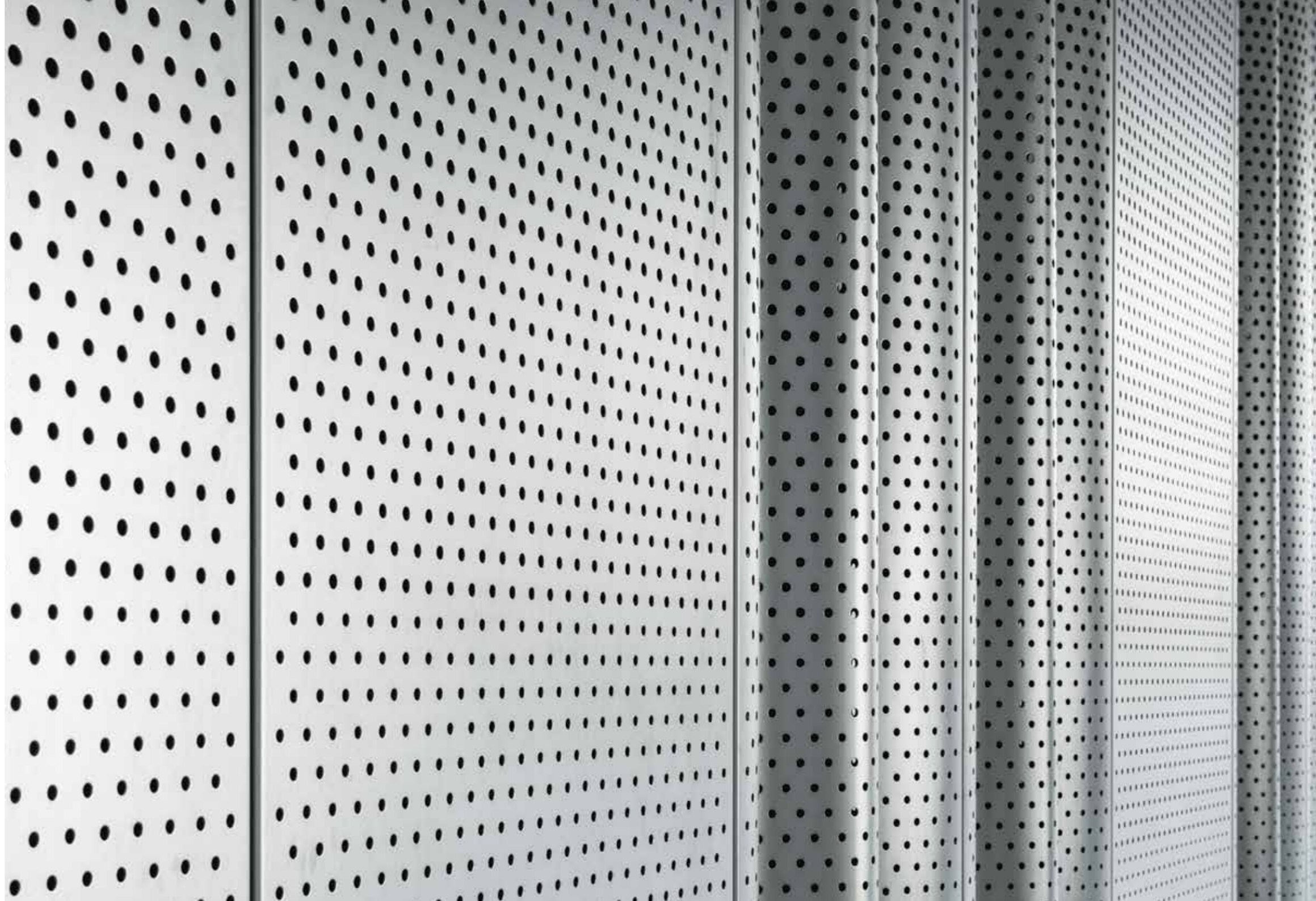
is tailored to meet its specific needs with utmost precision.

Guiding you from the initial stages of development and design through to the final

phases of manufacturing, we provide comprehensive support throughout the entirety of your project. With craftsmanship and dedication to quality, we transform architectural visions into **THE STATEMENT OF YOUR BUILDING.**

Stainless steel is durable and sustainable.

Stainless steel is exceptionally well-suited for designing facades, metal claddings for building envelopes, and exclusive interior decorations. The material is technologically good to process and offers a variety of options for surface finishing. Due to its high corrosion resistance, stainless steel is particularly durable and retains its appearance over a long period of time.



Visual Arts Building · Iowa · USA | © Iwan Baan

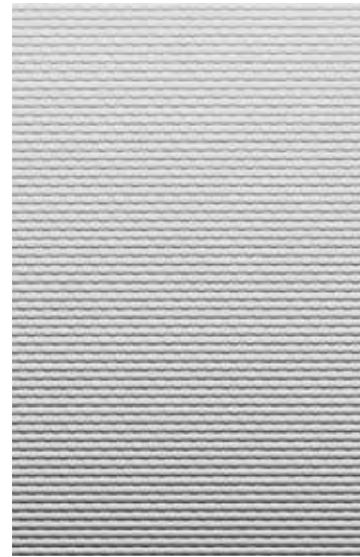


Stainless steel is a highly sustainable choice, being 100% recyclable and extremely energy

efficient. Recycling stainless steel consumes significantly less energy than producing new stainless steel

from raw materials, making it an environmentally friendly choice. For these reasons, POHL exclusively processes solid metal

and incorporates recycled raw materials into their production to ensure the sustainability and quality of their products.



LINEN



HAZE



CUSTOM EMBOSSING

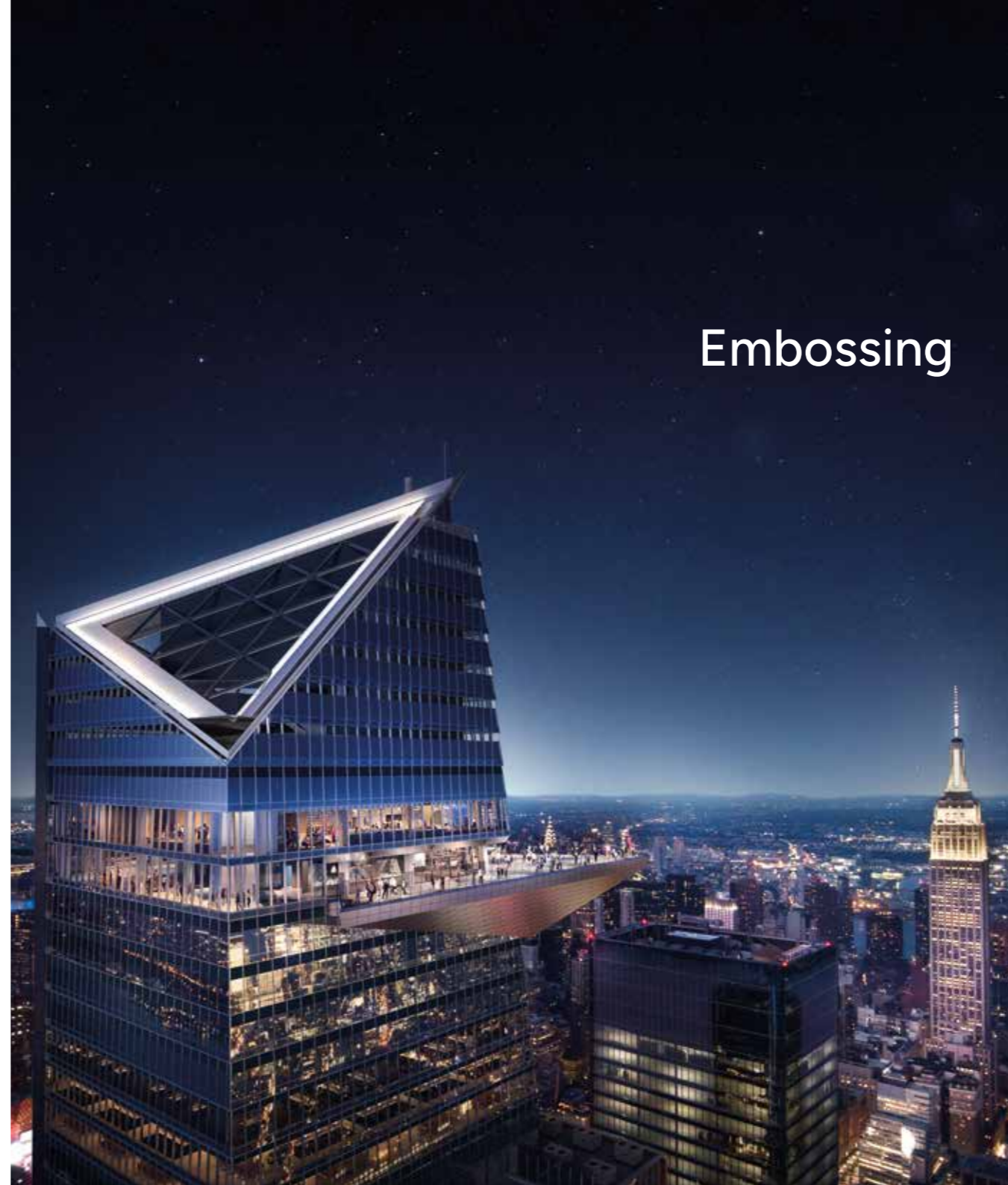


CUSTOM EMBOSSING

Embossing

Stainless steel sheets with a delicate or elaborate embossing lend the facade a definite structured and clear look. With an embossed finish, a direct reflection – often unwanted – can be reduced without losing the reflective quality of the material. Whether the embossing is coarse or fine, it brings a unique texture and depth to the design.

The Edge - NYC - USA | © KPF



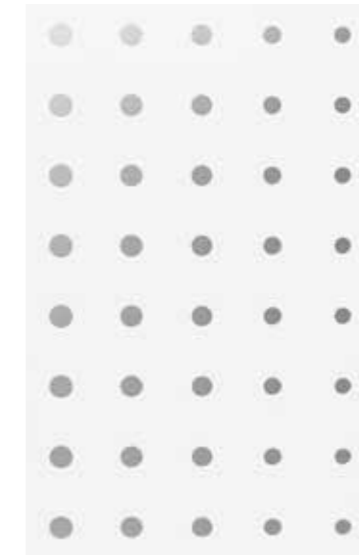
Perforation

Perforated panels serve as excellent facade elements, combining functional and aesthetic advantages. They filter light and contribute to effective shading, which helps in regulating the interior temperature while creating an intriguing play of dappled light inside the building. They offer privacy from the outside but keep rooms well-lit and allow unobstructed views from within.

A key manufacturing advantage is the ability to incorporate almost any pattern into the material, providing immense flexibility in design. This allows for the creation of a personalized and custom look, tailored to individual preferences and architectural styles.



Visual Arts Building · Iowa · USA | © Iwan Baan



ALL EXAMPLES OF CUSTOMIZED PERFORATIONS

Colored Stainless Steel

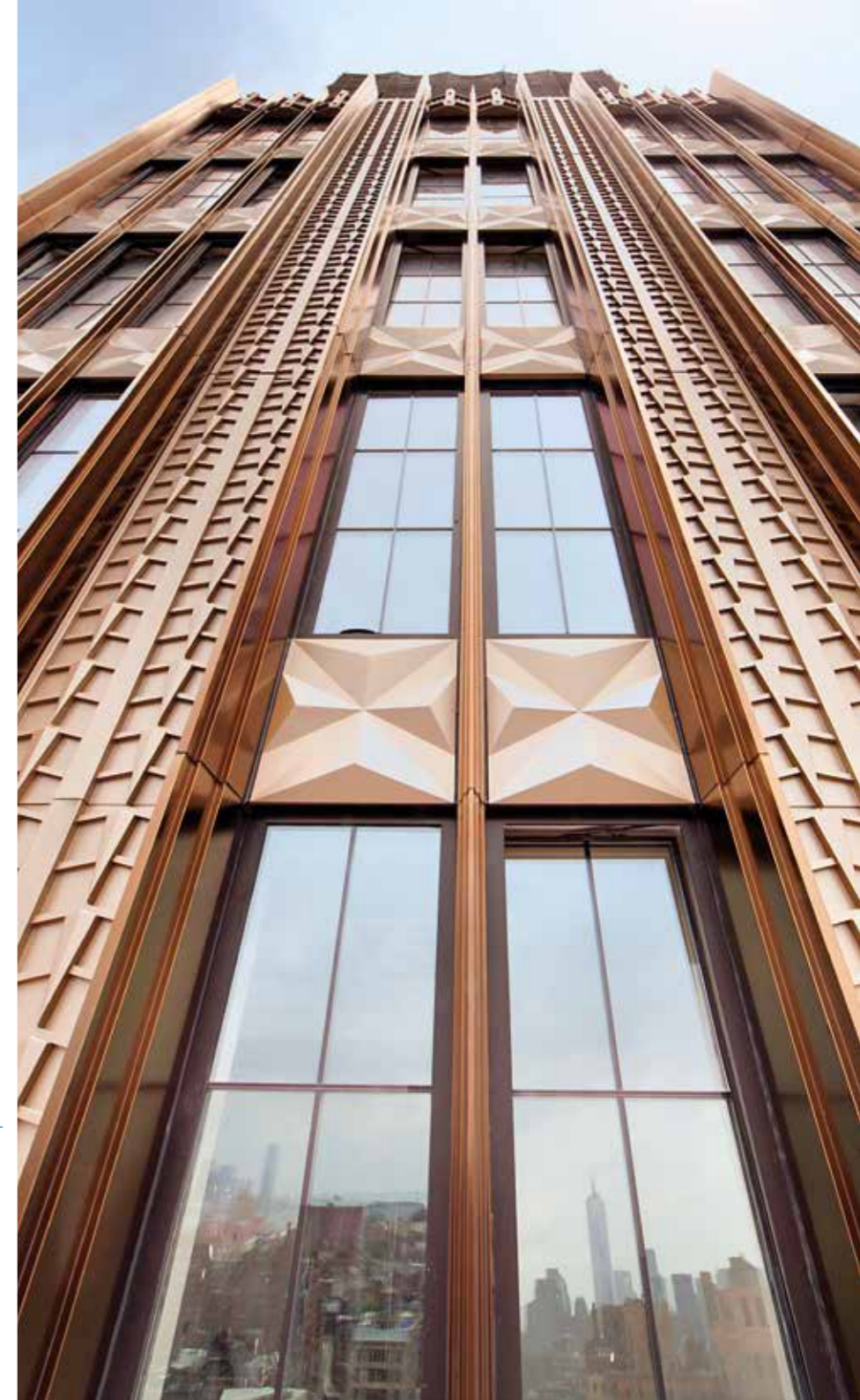
Through an elaborate finishing process, stainless steel can be painted in any desired color. The paint remains within the passive layer of the steel, which makes the surface extremely durable and protects it from the effects of weathering.

A useful method for replicating materials and appearances, allowing architects to achieve the desired aesthetic without compromising on durability and performance.



ALL EXAMPLES OF COLORED STAINLESS STEEL FINISHES

Walker Tower · NYC · USA | © Nico Arellano



Charcoal Matt

One result of the colored stainless steel method is POHL Charcoal Matt. This finish offers a sophisticated and modern charcoal look while maintaining the advantages of stainless steel.

Available as standard or cloudy finish in different variations.



CHARCOAL MATT



CHARCOAL MATT CLOUDY FINISH

Cromwell Place · London · UK | © Matt Chisnall



Brushed surfaces and high gloss polish

When opting for mechanical surface finishing, various textures can be selected to match the design vision. Whether a subtle matte effect with no glare, bold or fine structures, or a striking reflective surface is desired, any effect can be achieved.

5 Broadgate - London - UK | © David Bleeker Architectural





STRAIGHT – DIRECTIONAL BRUSH WITH STRUCTURE



#8 MIRROR POLISH



VIBRATION – NON-DIRECTIONAL BRUSH WITH A DELICATE APPEARANCE



BEAD BLASTED – EVEN AND MATTE SURFACE



Satin brushed finishes, such as #6 finish, POHL Hairline, or POHL Vibration, offer surfaces with indirect reflections and light breaks, while ensuring easy cleaning and maintenance.

For polished stainless steel, we offer a full range of qualities. The #7 finish shows faint polish lines, #8 is non-directional, and #10 is a high gloss polish that leaves no marks. These highly reflective surfaces are perfect for seamless panel-to-panel matching, interior wall panels, copings, and trims, as they amplify perceived space and add depth and luminosity to any environment.

Etched Surfaces

Whether diffuse or precise, expansive, or accentuated, etched stainless steel surfaces offer a unique opportunity for those seeking an exclusive and extraordinary look for their building.

The special etching process adds more dimension to the structure and opens a wide range of design possibilities.



ALL EXAMPLES OF ETCHED STAINLESS STEEL FINISHES

POHL

POHL FACADE DIVISION

POHL Metal Systems GmbH
Robert-Bosch-Str. 6
50769 Cologne
Germany

Tel.: +49 221 70911-0

info@pohl-facades.com
www.pohl-facades.com

